

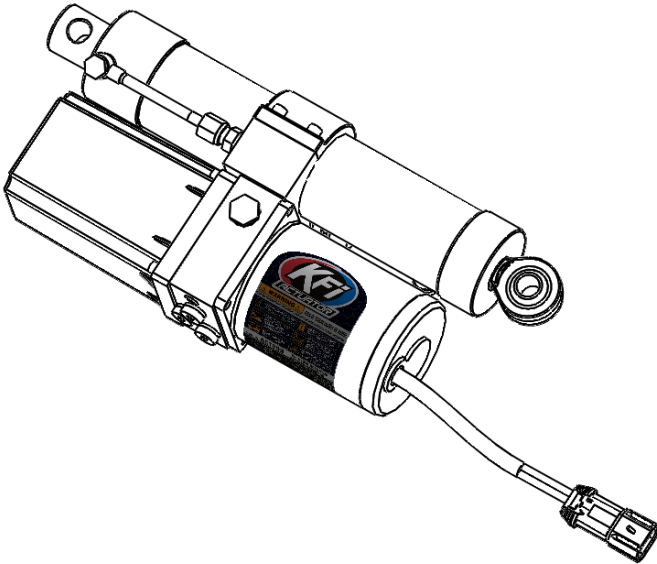




# OPERATOR'S MANUAL

## MODEL #ACT203

### ACTUATOR

SERIAL NO. LABEL



  **1-877-346-2050**

or visit [www.kfiproducts.com](http://www.kfiproducts.com)

**READ AND SAVE THIS MANUAL.** This manual contains important safety precautions which should be read and understood before operating the product. Failure to do so could result in serious injury. This manual should remain with the product.

Specifications, descriptions, and illustrations in this manual are as accurate as known at the time of publication,



TABLE OF CONTENTS

Introduction..... 3

Safety Definitions... 4

Important Safety Instructions... 5

Controls and Features. . . . . 6

Service parts..... 7

Kit Components.. . . . . 8

Warranty .. . . . .9-11

## INTRODUCTION

Congratulations on your purchase of a KFI Products Actuator (Kappers Fabricating, Inc.). KFI designs, builds, and supports all of our products to strict specifications and guidelines. With proper product knowledge, safe use, and regular maintenance, this product should bring years of satisfying service. Every effort has been made to ensure the accuracy and completeness of the information in this manual at the time of publication, and we reserve the right to change, alter and/or improve the product and this document at any time without prior notice.

Since KFI highly values how our products are designed, manufactured, operated and are serviced, and also highly value your safety and the safety of others, we would like you to take the time to review this product manual and other product materials thoroughly and be fully aware and knowledgeable of the assembly, operation, dangers and maintenance of the product before use. Fully familiarize yourself, and make sure others who plan on operating the product fully familiarize themselves too, with the proper safety and operation procedures before each use. Please always exercise common sense and always err on the side of caution when operating the product to ensure no accident, property damage, or injury occurs. We want you to continue to use and be satisfied with your KFI product for years to come.

When contacting KFI about parts and/or service, you will need to supply the complete model and serial numbers of your product. Transcribe the information found on your product's nameplate label to the table below.

### KFI TECHNICAL SUPPORT TEAM

1-877-346-2050 Option #2

### MODEL NUMBER

ACT203

### SERIAL NUMBER

### DATE OF PURCHASE

### PURCHASE LOCATION

## SAFETY DEFINITIONS

The purpose of safety symbols is to attract your attention to possible dangers. The safety symbols, and their explanations, deserve your careful attentions and understanding. The safety warnings do not by themselves eliminate any danger. The instructions or warnings they give are not substitutes for proper accident prevention measures.

### **⚠ DANGER**

DANGER indicates a hazardous situation which, if not avoided, will result in death or serious injury.

### **⚠ WARNING**

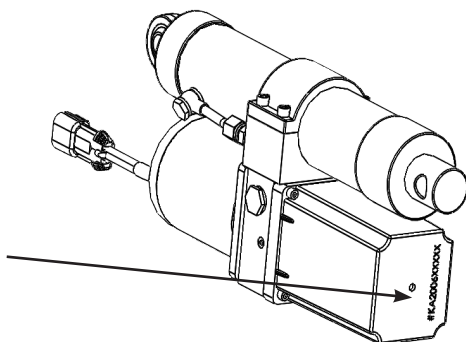
WARNING indicates a hazardous situation which, if not avoided, could result in death or serious injury.

### **⚠ CAUTION**

CAUTION indicates a hazardous situation which, if not avoided, could result in minor or moderate injury.

### **🗨 NOTICE**

NOTICE indicates information considered important, but not hazard-related (e.g., messages relating to property damage or physical injury).



**SERIAL NUMBER LOCATION**

# IMPORTANT SAFETY INSTRUCTIONS

## WARNING

Cancer and Reproductive Harm -  
[www.P65Warnings.ca.gov](http://www.P65Warnings.ca.gov)

## WARNING

Do not exceed the rated capacity.

## DANGER

Do not use this actuator for lifting or moving people or animals.

## DANGER

Keep yourself and others a safe distance to the side of the actuator when in use.

## DANGER

Never step over or near an actuator under load.

## WARNING

The actuator may break before the motor stalls.

**⚠ CAUTION**

CAUTION indicates a hazardous situation which, if not avoided, could result in minor or moderate injury.

The KFI Actuator, plow system, including the blade and push tube, is designed to be used with UTV applications. Due to the size and weight of the machine, failing to follow the below safety rules will greatly increase the chances of damaging your actuator, plow system, machine and/or winch (if applicable). KFI will not be liable for any bending of materials as it is not caused by imperfections or defects in the material but by failing to follow these safety rules:

- Do not exceed 5 MPH, even with the blade raised.
- Before every use make sure that all nuts and bolts are tightened per installation instructions.
- Never operate this KFI product with missing or damaged parts.
- Drive slowly over bumpy and rough terrain, driving fast could cause damage to actuator and/or (if applicable) plow.
- Never raise the plow above point of contact as it could cause damage to machine, actuator or winch (if applicable).
- Always perform regular inspections and maintenance on plow system and hardware before use.
- Operate with extreme caution on slopes, steep grades, and rough terrain.
- Be aware of any possible hidden objects under the snow.
- Do not ram the blade into the snow **5**

Kappers Fabricating, Inc. (KFI) warrants to the original purchaser that the product is free from defects in materials and workmanship for a period of one (1) year from the original date of purchase. We will repair or replace, at our discretion, parts found to be defective due to materials or workmanship. This warranty is subject to the following limitations and exclusions:

**Commercial Use:** The warranty period for any product used for commercial or rental is limited to ninety (90) days from the date of original purchase.

**Limitations:** This warranty applies only to products which have been properly assembled, adjusted, and operated in accordance with the instructions contained within this manual. This warranty does not apply to any product of Kappers Fabricating, Inc. that has been subject to alteration, misuse, abuse, improper assembly or installation, or shipping damage.

**Exclusions:** Excluded from this warranty are normal wear, normal adjustments, and normal maintenance.

**THIS WARRANTY DOES NOT APPLY TO ANY INCIDENTAL OR CONSEQUENTIAL DAMAGES AND ANY IMPLIED WARRANTIES ARE LIMITED TO THE SAME TIME PERIODS STATED HEREIN FOR ALL EXPRESSED WARRANTIES.**

**THE WARRANTY SET FORTH ABOVE IS THE ONLY WARRANTY. THERE ARE NO OTHER WARRANTIES, EXPRESS OR IMPLIED, INCLUDING BUT NOT LIMITED TO IMPLIED WARRANTIES OF MERCHANTABILITY OR FITNESS FOR A PARTICULAR PURPOSE.**



**WARNING**

**RISK OF SEVERE INJURY OR DEATH:**

READ ALL PRECAUTIONS, WARNINGS, AND INSTRUCTION MANUALS BEFORE OPERATING.



• KEEP BYSTANDERS CLEAR FROM PLOW AT ALL TIMES.



• DO NOT EXCEED 5 MPH WITH PLOW INSTALLED.



• DRIVE SLOWLY OVER BUMPY / ROUGH TERRAIN. BEWARE OF OBSTRUCTIONS.



• NEVER RAISE PLOW OR ACTUATOR PAST POINT OF CONTACT. IT MAY DAMAGE YOUR PLOW SYSTEM.



• DO NOT RAM PLOW INTO THE SNOW.



• DO NOT PLACE HANDS OR FEET ON ACTUATOR. STAY CLEAR OF MOVING PARTS.

MODEL NO: **ACT203**

**KFI PLOW ACTUATOR**

PERFORMANCE SPECS:

VOLTAGE: DC 12V	MAX LOAD (PUSH): 1000 KG / 2205 LBS.
POWER: 0.3 KW / .4 HP	MAX LOAD (PULL): 700 KG / 1543 LBS.
CURRENT: 25A	STROKE: 203 MM / 8.00 IN.
PRESSURE: 15 MPA / 2175 PSI	HYDRAULIC OIL: 46H-LV (ISO 46)

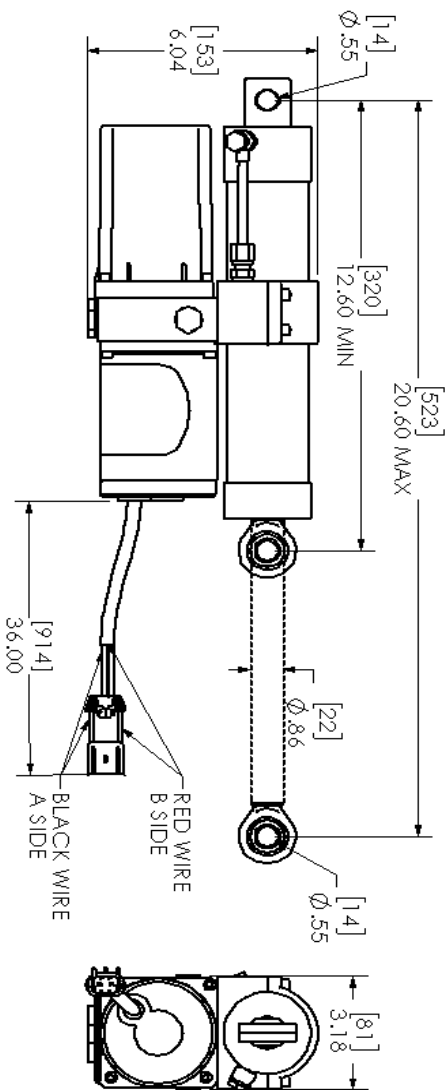
**PARTS & SERVICE:**  
1-877-346-2050  
WWW.KFIPRODUCTS.COM

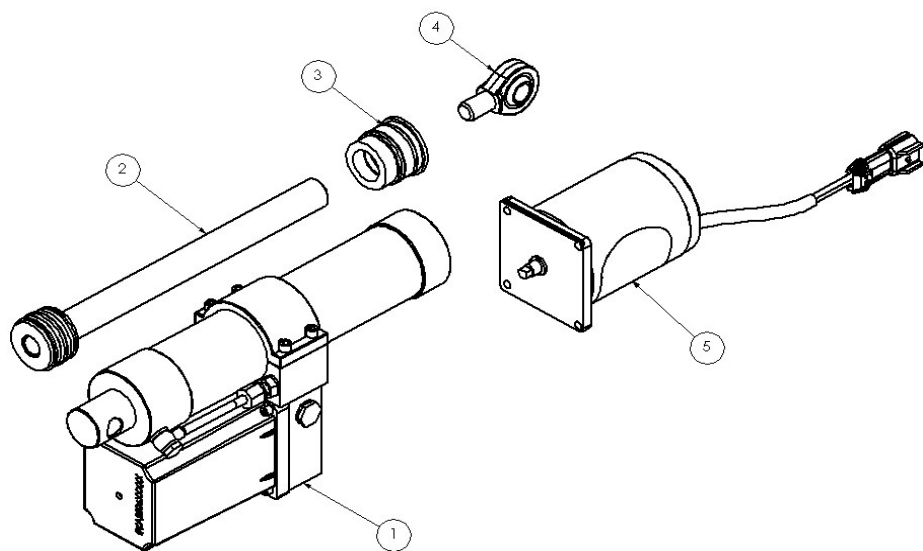
SOLD & DISTRIBUTED BY:  
KAPPERS FABRICATING, INC.  
SPRING VALLEY, MN



**WARNING:**  
Cancer and Reproductive Harm  
www.P65Warnings.ca.gov

MADE IN CHINA

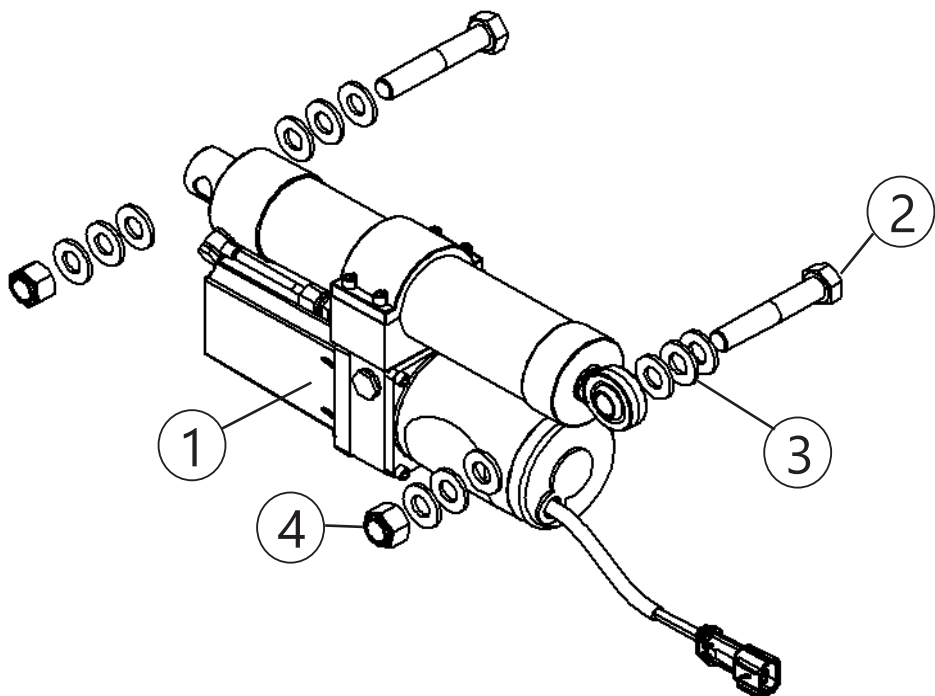




## ACTUATOR SERVICE PARTS LIST

Item #	Part #	Description	Qty
1	ACT-0010	ACT-0010 ACTUATOR	1
2	ACT-0001	SHAFT REPLACEMENT KIT- 40mm CYC,203mm STROKE w/ SEALS	1
3	ACT-0002	END SEAL REPLACEMENT KIT - 40mm CYC w/SEALS	1
4	ACT-0003	ROD END REPLACEMENT - M14x2	1
5	ACT-0004	MOTOR REPLACEMENT- TG12V HYDRAULIC ACTUATOR	1
6	ACT-0005	HYDRAULIC FULID 46L-HV LOW TEMPERATURE OIL	1





### Kit Components:

Item #	Qty.	Description
1	1	ACT-0010 ACTUATOR
2	2	M14-2.00 X 80 HEX BOLT GR8.8 ZINC
3	12	M14 FLAT WASHER ZINC
4	2	M14 x 2.00 HEX NUT NYLOCK ZINC

## Agreement

By purchasing and/or using any item from KFI and/or its parent company, the purchaser acknowledges to be at least 18 years of age. Purchaser also acknowledges that actuator products are inherently dangerous and hazardous, and that use of the product involves the risk and danger of serious bodily injury including, but not limited to, disability, paralysis, dismemberment and death. Additional risks may exist that may not be readily foreseeable.

Purchaser agrees to comply with all applicable laws governing the use of the product, and to observe all appropriate safety precautions, including the wearing of appropriate protective gear and clothing, and operating the product safely and under safe conditions.

Purchaser fully accepts and assumes responsibility for all such risks, losses, costs, and damages incurred as a result of the use of the product, whether by purchaser or anyone using the product with or without purchaser's permission.

Your purchase of the product shall constitute your release and indemnity in favor of KFI and/or its parent company, its shareholders, officers, directors and employees from any and all claims or injuries of every kind resulting from use or operation of the product, including costs and attorney's fees incurred in connection therewith.

## Warranty

### Contact Information

#### Address

KFI Products  
Winch Customer Service  
P.O. Box 32  
721 Sata Drive  
Spring Valley, MN 55975

#### Corporate:

Kappers Fabricating Inc.  
1015 Industrial Dr.  
P.O. Box 32  
Spring Valley, MN 55975

### Customer Service

Mon – Thur 8:00 AM – 5:00 PM (CST/CDT)  
Fri 7:00 AM – 1:00 PM (CST/CDT)  
Toll Free: 1-877-346-2050 Option #1  
Fax no.: 1-507-346-2010  
sales@kfiproducs.com

### Technical Service

Mon – Thur 8:00 AM – 5:00 PM (CST/CDT)  
Fri 7:00 AM – 1:00 PM (CST/CDT)  
Toll Free: 1-877-346-2050 Option #2  
tech@kfiproducs.com

# Product Registration

Please register your product with Kappers Fabricating, Inc. (KFI) within fifteen (15) days of purchase to assist us in handling any warranty issues that may arise by filling out this Registration card and submitting it with a copy of your sales receipt from one of KFI's official resellers. Failure to complete and return this Registration card does not diminish your warranty rights.

Please refer to the above section for complete terms of this warranty.

Fill out and send this section to:

KFI Products  
Warranty Registration Department  
721 Sata Drive, PO Box 32  
Spring Valley, MN 55975, U.S.A.

WARRANTY IS NON-TRANSFERABLE

Please Print Clearly

Model # **ACT203** SERIAL # \_\_\_\_\_

Name \_\_\_\_\_

Street Address \_\_\_\_\_

City \_\_\_\_\_ State \_\_\_\_\_ Zip Code \_\_\_\_\_

Phone \_\_\_\_\_ Fax \_\_\_\_\_ Email \_\_\_\_\_

Date of Purchase \_\_\_\_\_ Authorized KFI Dealer Name \_\_\_\_\_