

ACCESSORY SETUP INSTRUCTION

AUDIO ASSEMBLY -- PN 5ASV-801000

VALID FOR: MY2021 and Newer UFORCE 600 UTVs


BEFORE YOU BEGIN: Read and understand the instructions before starting any work. Make sure that all parts are ready and that you have all the tools required for assembly.


NOTE: CFMOTO shall not be liable for any damage caused by incorrect assembly. CFMOTO recommends that all original accessories be assembled by an authorized CFMOTO dealer.

Before assembly, park the vehicle on a flat surface, put the transmission gear into Park (P) and turn off the key switch.

Zhejiang CFMOTO Power Co., Ltd. All rights reserved. Reproduction of this document, even in part, as well as copying of all kinds, is permitted only with the express written permission of the copyright owner.

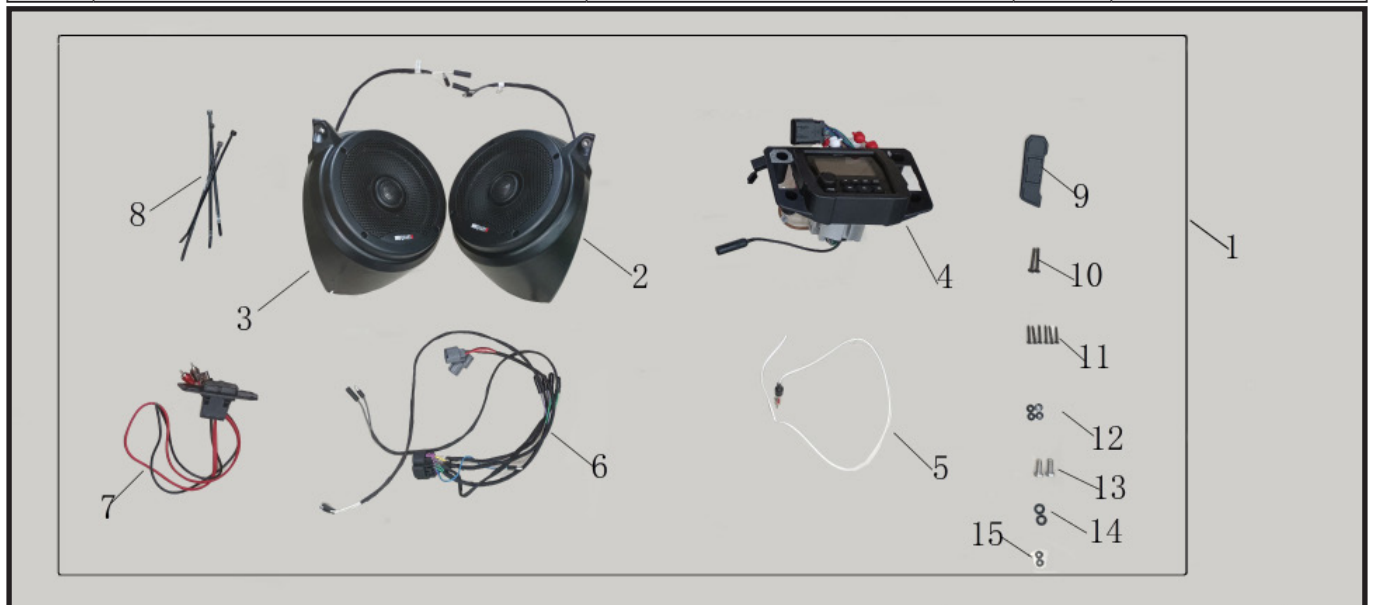
MEANING OF SYMBOLS

 - Indicates information with more details or tips.

 - Indicates information of warning or danger.

PARTS LIST:

ITEM	PART NAME	PART NUMBER	QTY.	REMARK
1	AUDIO ASSEMBLY	5ASV-801000	1	
2	SPEAKER L	5ASV-801200	1	
3	SPEAKER R	5ASV-801300	1	
4	RADIO	5ASV-801100	1	
5	AERIAL	5ASV-801410	1	
6	CABLE	5ASV-801400	1	
7	USB ADAPTOR CABLE/RH DECO COVER	5ASV-801420	1	
8	TIE BAND	520090-00686	8	
9	LH DECO COVER	5ASV-801430	1	
10	SCREW ST4.8×32	5ASV-801404	2	
11	SCREW ST3.8×25	5ASV-801405	4	
12	WASHER 4×12×1	5ASV-801402	4	
13	BOLT 8×18	5ASV-801406	2	
14	WASHER 8×16×1.5	5ASV-801401	2	
15	WASHER 5×16×1	5ASV-801403	2	



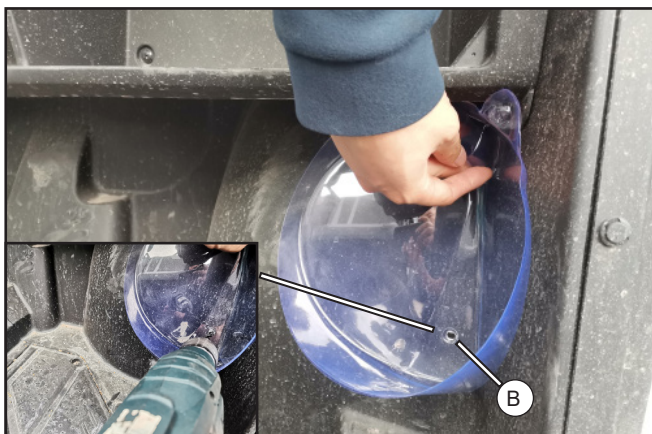
TOOL LIST:

ITEM	DESCRIPTION	QTY.	REMARK
1	PROTECTIVE GLOVES	1	Recommended Tools
2	PHILLIPS SCREWDRIVER		
3	CUTTER		
4	10mm SOCKET	1	

ASSEMBLY and INSTALLATION

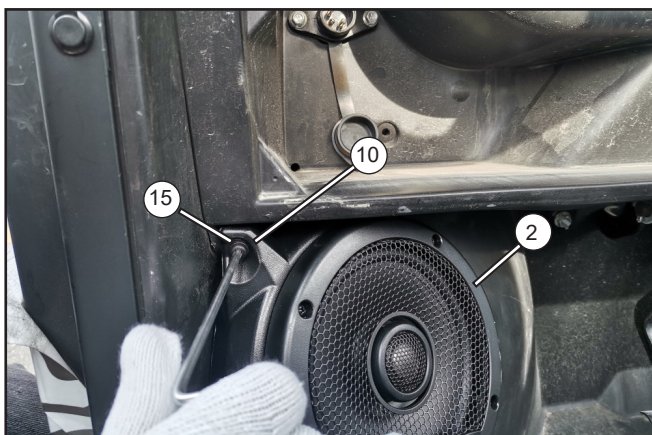

// Remove the screws (A) on the footrest.

i Left side shown. The right side is removed in the same way.



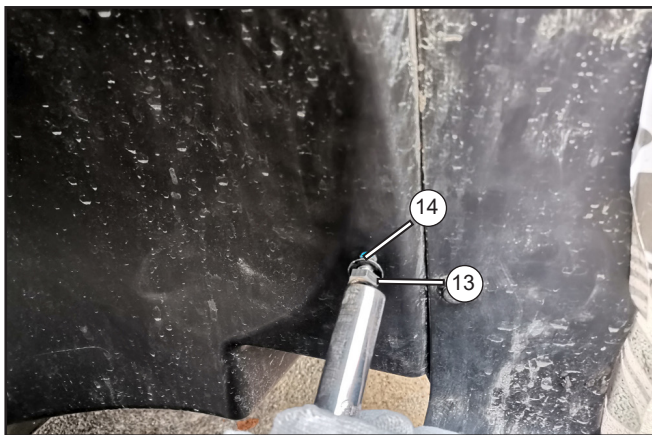
// Place the audio dust covers into position where the speakers will be assembled, and drill holes into the footrest at the concave point (B) shown.

i Right side shown. The left side is drilled in the same way. Discard the dust covers after drilling is completed.



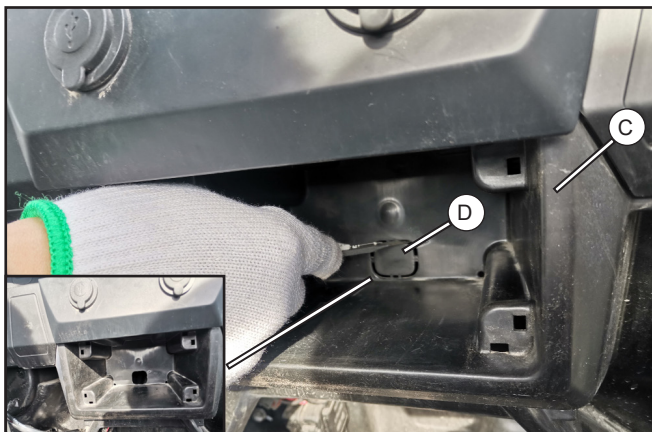
// Attach the speakers (2) to the footrest area on the front side with screw (10) and washer (15). *Do not fully tighten the screws at this time.*

i Left speaker shown. Speaker R (3) is assembled the same way.

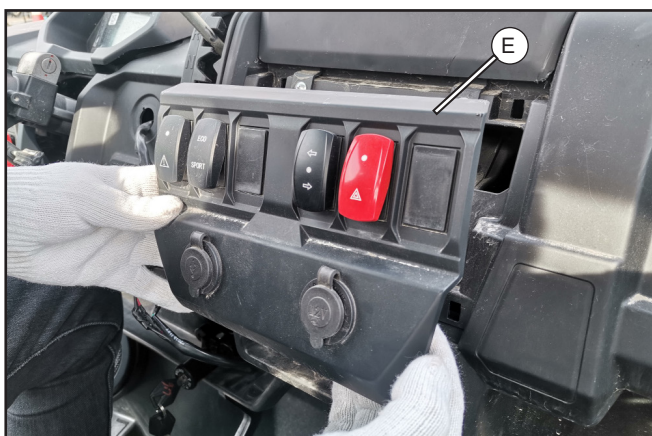


// Secure the backside of the speaker (2) through the footrest hole with bolt (13) and washer (14), then tighten screws (10) and bolts (13) evenly, using caution not to over-tighten.

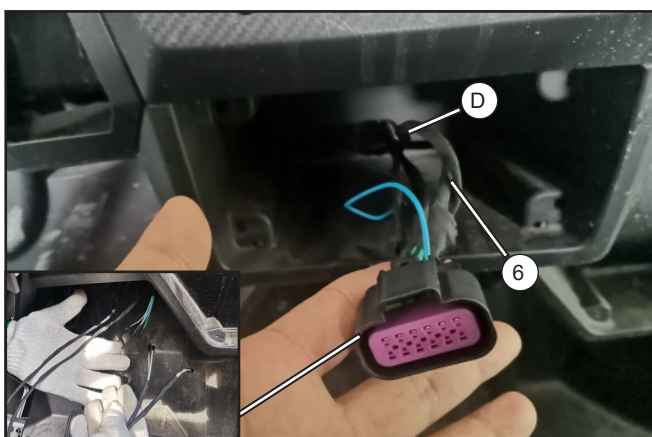
i Left speaker shown. Speaker R (3) is assembled the same way.

ASSEMBLY and INSTALLATION


// Cut out the reserve panel (D) of the storage box (C).

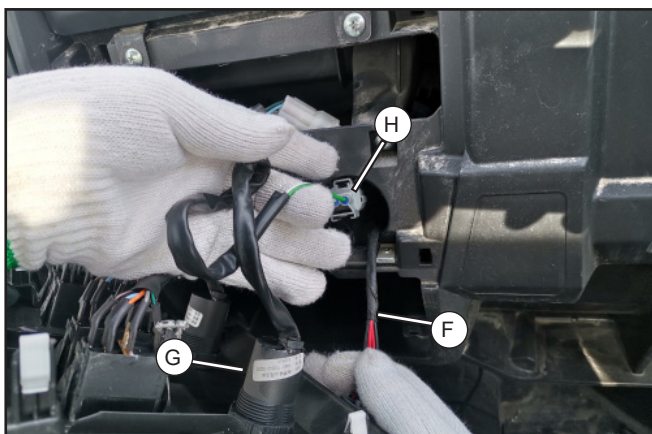


// Remove the switch panel (E).



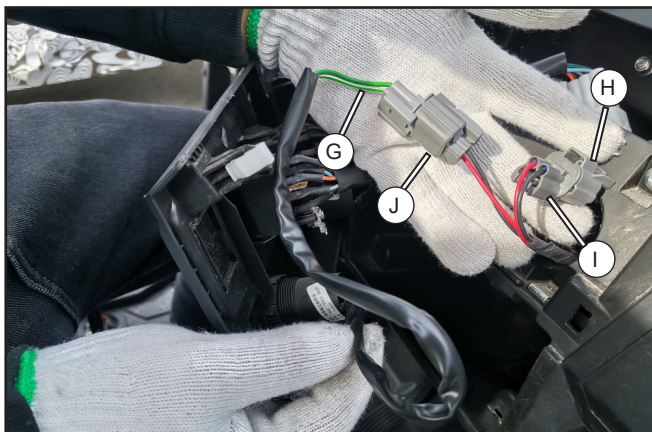
// Pass the cable (6) through the hole (D) of the storage box. The black connector end of the cable will reside in the storage box.

i Route the left and right speaker wires on the cable from the bottom of the storage box to the speakers. Ensure not to allow entanglement in any rotating or pivoting parts.



// Route the grey connector (F) bundle on the radio cable (6) to the installation position on the switch panel.

// Find the 12V power port and cable (G), and unplug the main power connector (H).

ASSEMBLY and INSTALLATION


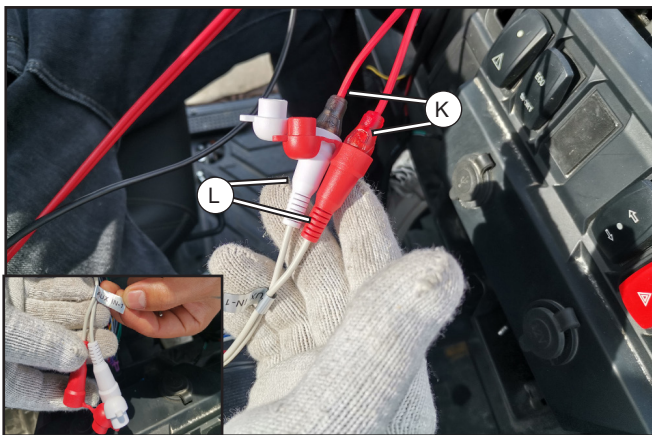
// Connect the cables as follows: Connector (I) on the radio cable (6) to the main power connector (H), and connector (J) on the radio cable (6) with the power port connector (G).



// Connect the radio (4) to the black connector of the cable (6).

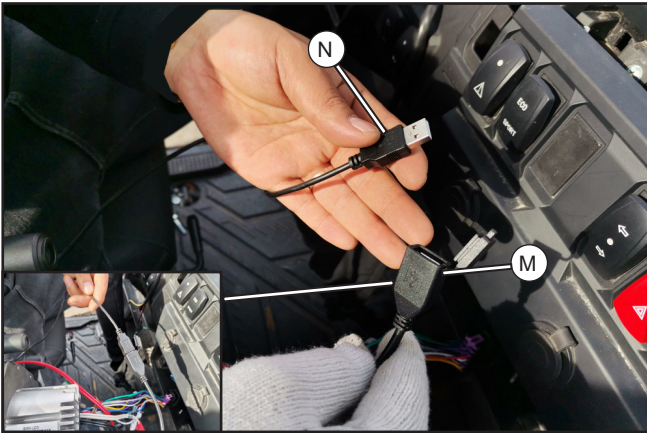


// Pass the USB adaptor cable / left deco cover (7) cable through the mounting hole on the right side of the radio (4).

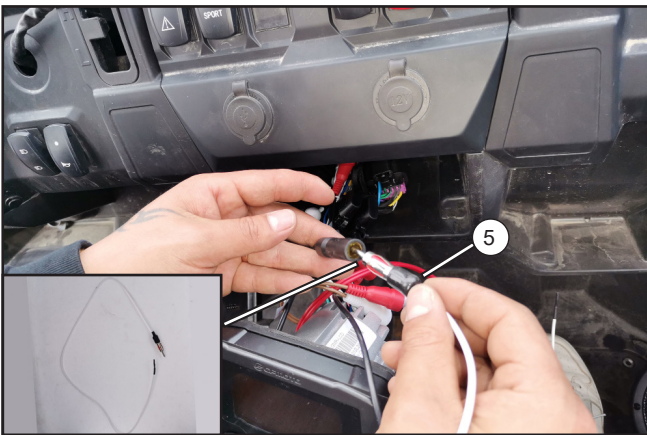


// Connect the ports (K) of USB adaptor cable (7) to the radio ports (L).

i Red to red. Gray to white.

ASSEMBLY and INSTALLATION


// Connect the USB port (M) on the radio to the port (N) of the USB adapter cable (7).

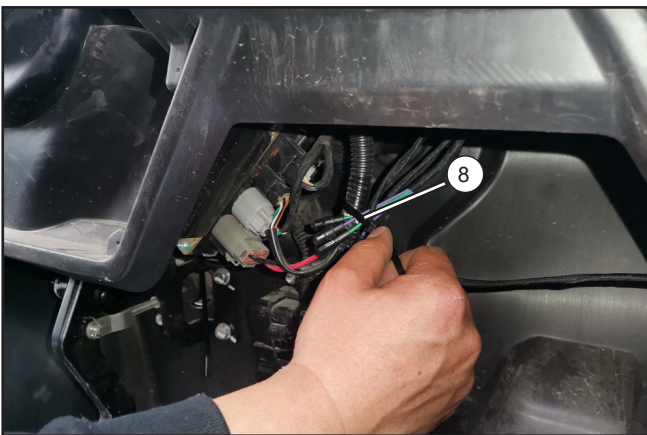


// Connect the aerial (5) to the corresponding cable for the radio.



// Connect the speaker cables (P) to the speakers (2).

i Left speaker shown. Speaker R (3) is assembled the same way.



// Secure the remaining speaker cables and EPS control cable at the same position with tie band (8).

ASSEMBLY and INSTALLATION

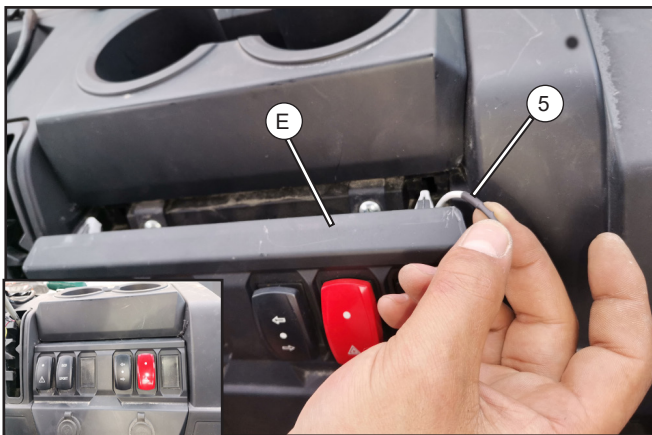

// Test each function of the radio (4).



// After radio debugging is completed, secure the radio cable and aerial (5) together with tie band (8).
 // Route the remaining aerial through the storage box hole (D).

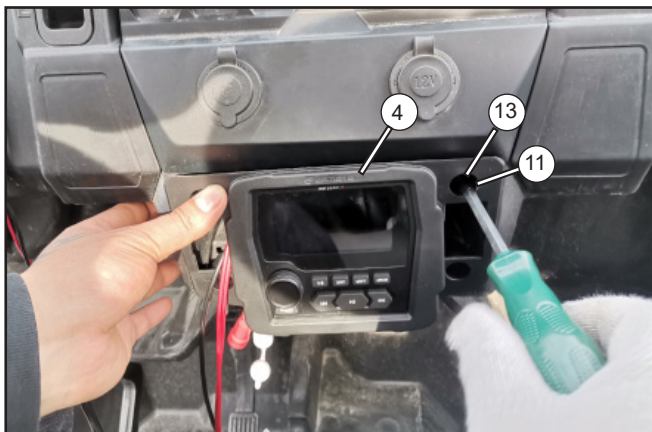


// Route the remaining aerial (5) to the installation position of the switch panel.
 // Secure the 12V power cable and aerial (5) together with tie band (8).



// Leave a portion of aerial (5) 1cm exposed and install the switch panel (E).

ASSEMBLY and INSTALLATION



// Position the radio (4) into the storage box, then install washers (13) and screws (11). Tighten the screws evenly, using caution not to over-tighten.



// Remove the protective tape from the back of the USB deco cover (7) and the left deco cover (9) and paste them onto both sides of the radio.

i Ensure the surfaces are clean before installing.

