

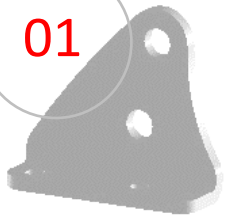


# INSTALLATION INSTRUCTIONS

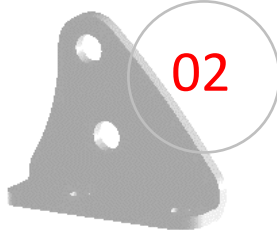
SKU: **LK-10242**

2" LIFT KIT CF MOTO UFORCE 800 (2013+)

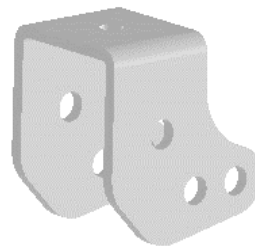
01



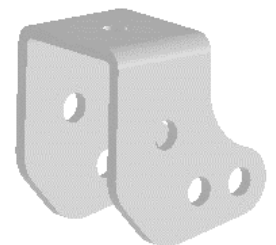
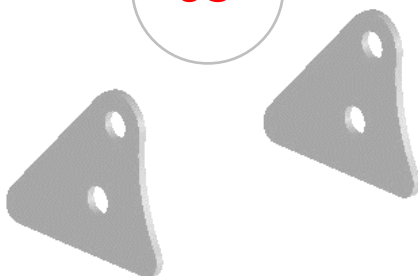
02



04



03



Item	Part No.	Description	Qty.
------	----------	-------------	------

### LIFT COMPONENTS

Those items are shown on the first page.

01	<b>10242-01L</b>	Front lift bracket (left side)	<b>1</b>
02	<b>10242-01R</b>	Front lift bracket (right side)	<b>1</b>
03	<b>10242-02</b>	Front lift bracket	<b>2</b>
04	<b>10242-03</b>	Rear lift bracket	<b>2</b>

### FRONT HARDWARE

Those items are included with each kit to install the front lift components.

05		M6-1.00 x 20mm Hex Flange Bolt, 8.8, Zinc Finish	<b>4</b>
06		M6-1.00 Hex Flange Nylon Lock Nut, 8.8, Zinc Finish	<b>4</b>
07		M10-1.50 x 60mm Hex Flange Bolt, 8.8, Zinc Finish	<b>2</b>
08		M10-1.50 Hex Flange Nylon Lock Nut, 8.8, Zinc Finish	<b>2</b>
09		12mm ID. x 11/16" OD. x 1-1/8" Lg. steel spacer	<b>2</b>

### REAR HARDWARE

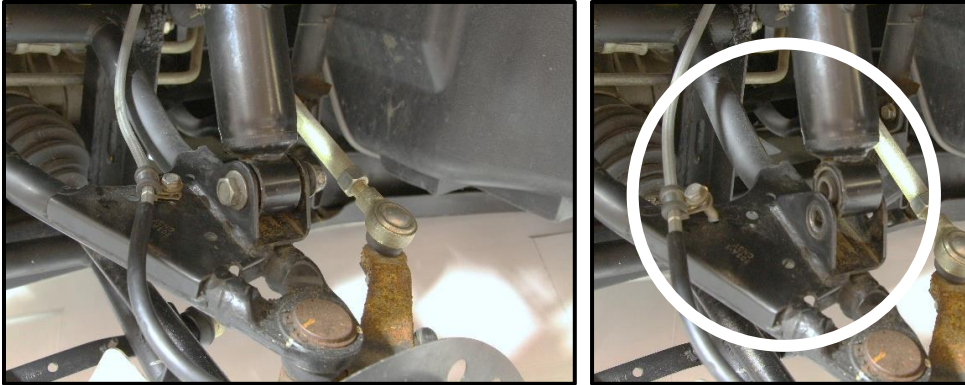
Those items are included with each kit to install the rear lift components.

10		M8-1.25 x 25mm Hex Flange Bolt, 8.8, Zinc Finish	<b>2</b>
11		M8-1.25 Hex Flange Nylon Lock Nut, 8.8, Zinc Finish	<b>2</b>
12		M10-1.50 x 70mm Hex Flange Bolt, 8.8, Zinc Finish	<b>4</b>
08		M10-1.50 Hex Flange Nylon Lock Nut, 8.8, Zinc Finish	<b>4</b>
13		M10 x 20mm OD. Flat Washer, Zinc Finish	<b>2</b>
14		M10 x 20mm OD. Flat Heavy Washer, Zinc Finish	<b>2</b>
15		12mm ID. x 11/16" OD. x 1-9/16" Lg. steel spacer	<b>2</b>

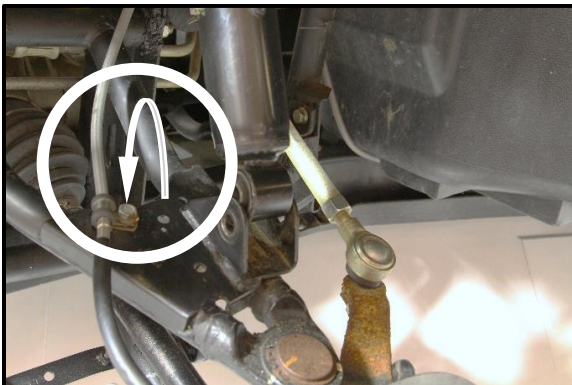
## FRONT INSTALLATION INSTRUCTIONS

### PREPARATION

- Using a jack under center of front end, lift until the front wheels leave the ground.
- Remove the wheels.
- Disconnect the bottom of both shocks from the suspension arms. **Use a 15mm wrench and socket.**



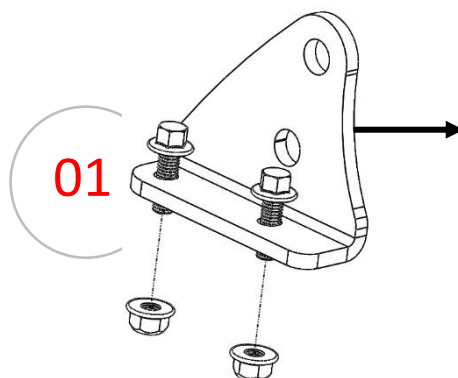
- Remove the circle clip, on both sides, that secure the hose brake to the suspension arm. **Use a 10mm wrench and socket.**
- Re-connect the clips to their new position on the A-arms suspensions. See image below.



- Remove all the dirt that is on your a-arms, on each side and inside of the shock's mounts. The lift brackets will need to be well abutted to the arms.

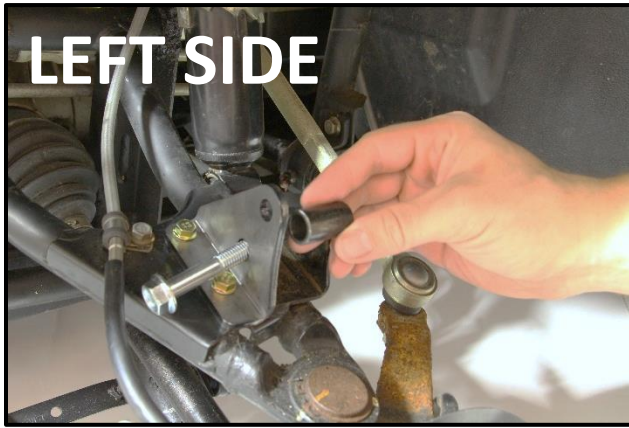
### INSTALLATION

1. Install (1x) front bracket (use the appropriate bracket) to the suspension arm. Use (2x) M6x20mm bolt and (2x) M6 lock nut.

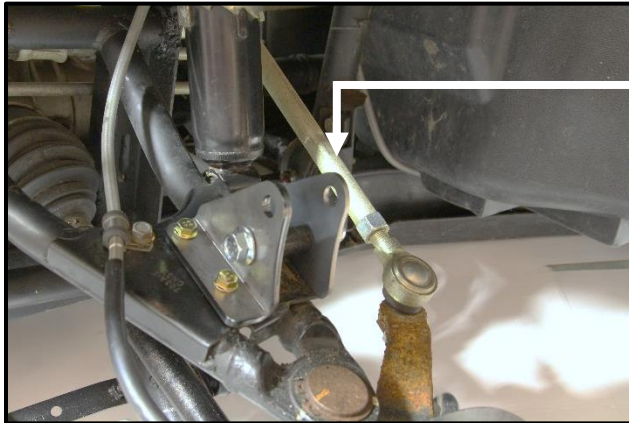




2. Install the bracket to the shock mount. Use (1x) M10-1.50 x 65mm bolt and (1x) 1-1/8" Lg. spacer.



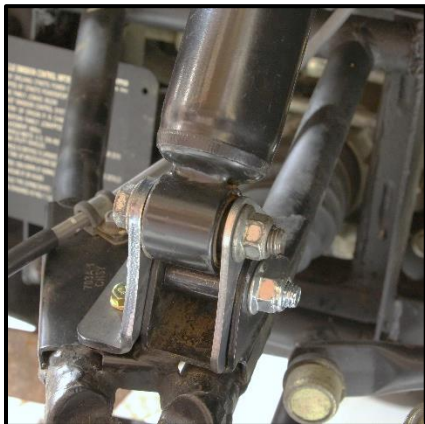
3. Insert the second front bracket to the assembly (item 03), inside of the shock mount. Secure using (1x) M10 lock nut.



4. Connect the bottom of the shock to his new shock location on the brackets. Use factory bolt and nut.



5. Tight all the hardware appropriately at this point.



6. Repeat the same steps for the opposite side.  
7. Put the wheels back on the vehicle when the installation is finished. Torque all lugs to factory specification.

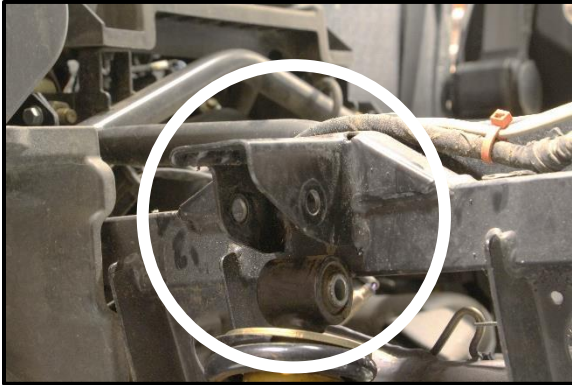
## REAR INSTALLATION INSTRUCTIONS

---

### PREPARATION

---

- Using a jack under center of rear end, lift until the rear wheels leave the ground.
- Remove the wheels.
- Disconnect the top of both shocks from the frame shock mount. **Use a 15mm wrench and socket.**



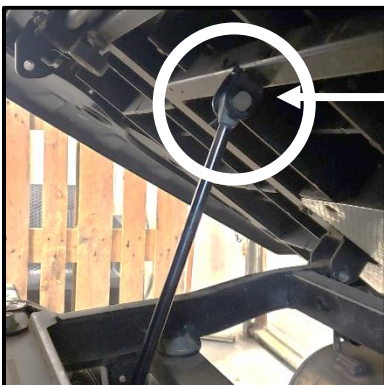
### INSTALLATION

---

1. Insert **(1x)** rear bracket to the frame shock mount. Use **(1x)** M10x70mm bolt to fix the bracket at his place.



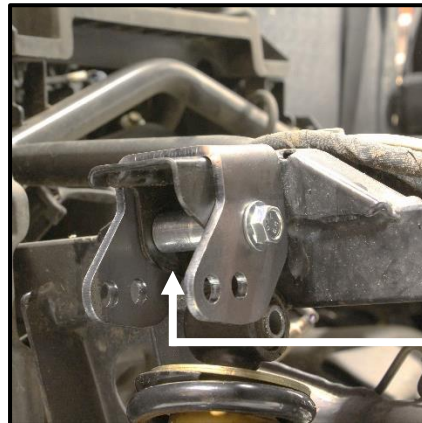
2. Then, mark the hole on the top of the bracket. You will need to drill a hole through the frame at this place.
3. Remove the bracket.
4. Open the cargo box and disconnect the cylinder from the cargo box. It will allow you more space to drill the hole.



**DISCONNECT**



- Using a 5/16" drill bit, drill a hole through the point marked on step 2.  
**NOTE: Use a black paint to paint the drilled hole, to prevent rust.**
- Put the rear bracket back on the frame. Install it to the shock mount using (1x) M10x70mm bolt, (1x) 1-9/16" Lg. spacer and (1x) M10 lock nut.



1-9/16" Lg. SPACER

- Secure the top of the bracket using (1x) M8x25mm bolt and (1x) M8 lock nut. **Tight this nut completely.**  
**NOTE: Use a 10mm wrench to bring the M8 lock nut inside of the frame shock mount**
- Connect the top of the shock to his new shock location on the bracket. Use (1x) M10x70mm bolt, (1x) M10 washer, (1x) M10 heavy washer and (1x) M10 lock nut. Put one washer on each side of the shock eyelet.
  - INSIDE LIFT POSITION: Lower lift position.**
  - OUTSIDE LIFT POSITION: Higher lift position.**



- Tight all the remaining hardware appropriately at this point.
- Repeat the same steps for the opposite side.
- Re-connect the cylinder to the cargo box.
- Put the wheels back on the vehicle when the installation is finished.  
Torque all lugs to factory specification.

