

**SUBJECT:** Ball Joint and A-Arm Improvement  
**VEHICLE(S) AFFECTED:** All ZFORCE / UFORCE  
**ISSUED:** July 17, 2019

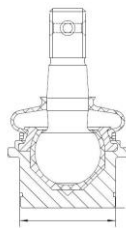
PLEASE NOTE: This parts notice is intended to inform service personnel of changes and improvements to CFMOTO components. No warranty coverage applies, is implied, or is to be inferred as a result of this publication. Questions regarding this publication should be directed to CFMOTO Technical Service.

<b>Dealer Sign Off Section – Please notify the appropriate personnel</b>	
<b>Sales Manager</b>	
<b>Warranty/SVC Manager</b>	
<b>Technician(s)</b>	

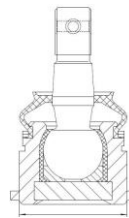
CFMOTO-USA is advising dealerships that as part of continuous quality improvement, lower ball joint and lower A-arm changes were implemented into production on ZFORCE and UFORCE vehicles as a running change:

**ZFORCE** – The lower ball joint and lower A-arm have been configured to UFORCE specifications. These new parts are identified by the following characteristics:

- The physical diameter of the lower ball joint has increased to 36mm.

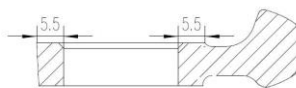


**OLD DESIGN**  
32mm Dia.



**NEW DESIGN**  
36mm Dia.

- The lower A-arm ball joint seat width has increased to 7.5mm and only accepts the 36mm ball joint.



**OLD DESIGN**  
5.5mm Seat Width



**NEW DESIGN**  
7.5mm Seat Width

- The ball joint installation method has changed and is now the same as the UFORCE. The 36mm ball joint is pressed into the bottom side of the A-arm and secured on the top side with a circlip. The previous design pressed in from the top, and secured with a circlip at the bottom.



**OLD DESIGN -32mm**  
Top Press To Install  
Circlip On Bottom



**NEW DESIGN -36mm**  
Bottom Press To Install  
Circlip On Top

**NOTE:** ZFORCE Upper A-arm and ball joint parts remain unchanged.

**UFORCE** – The lower A-arm has been strengthened:

- The lower A-arm ball joint seat width has increased to 7.5mm.

**CONTINUED ON PAGE 2...**

Model/Part Matrix and Applied Date

Model	Part Desc.	Old P/N	New P/N	Applied Date
<b>SSV</b>				
ZFORCE 1000 (CF1000US-2)	RH Front Lower A-arm Ball Joint Circlip	7000-050210-1000 9030-050600 30801-03205	<b>7000-050210-20000</b> <b>9060-050900</b> <b>30801-03405</b>	<b>October 9<sup>th</sup>, 2018</b>
ZFORCE 800 EX (CF800)	LH Front Lower A-arm Ball Joint Circlip	7000-050410-1000 9030-050600 30801-03205	<b>7000-050410-20000</b> <b>9060-050900</b> <b>30801-03405</b>	<b>October 9<sup>th</sup>, 2018</b>
<b>Fitment Note:</b>				
7000-050210-1000 (RH) / 7000-050410-1000 (LH) 9030-050600 30801-03205		Can be replaced as an assembly by	<b>7000-050210-10000 / 5WBA-050410-10000</b> <b>9060-050900</b> <b>30801-03405</b>	
<b>UTV</b>				
ZFORCE 800 TRAIL (CF800US-A)	RH Front Lower A-arm Ball Joint Circlip	5WBA-050210 9030-050600 30801-03205	<b>5WBA-050210-10000</b> <b>9060-050900</b> <b>30801-03405</b>	<b>October 10<sup>th</sup>, 2018</b>
ZFORCE 500 TRAIL (CF500US)	LH Front Lower A-arm Ball Joint Circlip	5WBA-050410 9030-050600 30801-03205	<b>5WBA-050410-10000</b> <b>9060-050900</b> <b>30801-03405</b>	<b>October 10<sup>th</sup>, 2018</b>
<b>Fitment Note:</b>				
5WBA-050210 (RH) / 5WBA-050410 (LH) 9030-050600 30801-03205		Can be replaced as an assembly by	<b>5WBA-050210-10000 / 5WBA-050410-10000</b> <b>9060-050900</b> <b>30801-03405</b>	
<b>UTV</b>				
UFORCE 800 (CF800-3)	RH Front Lower A-arm	703A-050410	<b>703A-050410-10000</b> <b>703A-050210-20000</b>	<b>October 18<sup>th</sup>, 2018</b>
UFORCE 500 (CF500UU)	LH Front Lower A-arm	703A-050210		
<b>Fitment Note:</b>				
703A-050410 703A-050210		Can be replaced by	<b>703A-050410-10000</b> <b>703A-050210-20000</b>	

Add this notice to any CFMOTO service documents you may have printed and stored.